

JAW Series

1000~5000 Filter & Regulator





We make the difference

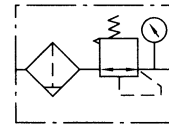
- FRL
- JC
- FE
- GC
- ZYR10
- MAR300LK
- AC, BC
- AFC, BFC
- AF, BF
- AR, BR
- AFR, BFR
- AL, BL
- JAC
- JAF
- JAR
- JAW**
- JAL
- PTH
- JAD



Ordering Code

JA	W	4000	04	D	N
Series	Function	Specification	Port size	Drain Type	Wiring Form
JAW2000-02	Filter & Regulator	1000	M5: M5 x 0.8	Blank: Semi-automatic	Blank: Standard N: Metal cup
		2000	01: G 1/8"		
		3000	02: G 1/4"		
JAW3000-03		4000	03: G 3/8"	D: Lever Auto Drain	
		5000	04: G 1/2"	D1 : Lever auto-drain With external thread	
			06: G 3/4" 10: G 1"	D2 : Pulse auto-drain	

Symbol



Specification

Model	JAW1000-M5	JAW2000-01	JAW2000-02	JAW3000-02	JAW3000-03	JAW4000-03	JAW4000-04	JAW4000-06	JAW5000-06	JAW5000-10
Rated Flow	100	550	550	2000	2000	4000	4000	4500	5500	5500
Port Size	M5	1/8	1/4	1/4	3/8	3/8	1/2	3/4	3/4	1
Filter Precision	25 μm									
Max. Adjustable Pressure	1.0 MPa									
Proof Pressure Resistance	1.5 MPa									
Operating Temperature Range	5 ~ 60 °C									
Range of Adjustable Pressure	0.05 ~ 0.7 MPa		0.05 ~ 0.85 MPa							
Container Material	Poly Carbonate									
Container Cup	Unavailable				Iron					
Drain Function	Differential Drain		Semi-automatic Drain, Automatic Drain							
Valve Type	With Overflow									