

JEL5404 Series

High Pressure and Temperature Solenoid Valve



We make the difference

- Valve
- DJF
- JELMP
- JELP/G
- MCS
- 4V100
- 4V200
- 4V300
- 4V400
- Manifold
- SV
- 3V1
- JEL
- 3VJZF
- 4VJZF
- MVSD
- VF, VZ
- BM
- Diaphragm
- Coil
- 2V
- 2W
- 2W(Big)
- 2P
- 2L
- VX
- PU
- PU225
- 2Q
- JEL5404**
- JEL6213
- BU
- Pulse
- JELJZF
- 4H
- TSV
- MPV
- 4HV
- HV, K
- 4R
- FV
- MSV
- JM
- ASC, RE
- QE, QEA
- ST
- HSV



JEL5404-04



JEL5404-06

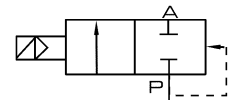


JEL5404-08

Ordering Code

JEL	5404	04	AC220V	D
JELPC	Model	Port size	Standard Voltage	Wiring
		04: 1/2"	DC12V DC24V	Blank: Lead wire with steel covered coil
		06: 3/4"	AC24V 50/60Hz	D: DIN terminal
		08: 1"	AC110V 50/60Hz	
			AC220V 50/60Hz	
			AC380V 50/60Hz	

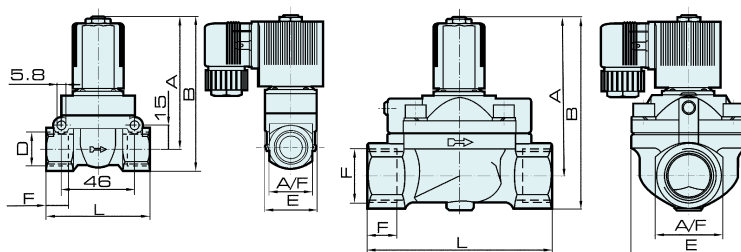
Symbol



Specification

Model	JEL5404-04	JEL5404-06	JEL5404-08
Working Medium	Air, Water, Oil		
Operation	Internal Piloted		
Type	Normal Colse		
Orifice	12 mm	20 mm	25 mm
KV Value	2.0	5.0	10.0
Port Size	1/2"	3/4"	1"
Applied pressure Range	Gas / Liquid: 0.1 ~ 5.0 MPa	Gas: 1 ~ 4.0 MPa Liquid: 0.1 ~ 2.5 MPa	Gas: 0.1 ~ 4.0MPa Liquid: 0.1 ~ 2.5MPa
Max. Test Pressure	7.5 MPa	6.0 MPa	
Ambient Temperature Range	-5~150 °C		
Applied Voltage Range	± 10%		
Protection	IP 65		
Power Consumption	AC: 5.5VA DC: 9W		
Insulation	F Class		
Material of Body	Brass		
Material of Oil Seal	PTFE		

Overall Dimension



Dimension

Model	Orifice mm	Port Size	A	B	F	D	L	A/F
JEL5404-04	12.0	1/2"	83.0	95.5	14	32	65	27
JEL5404-06	20.0	3/4"	99.5	119	16	60	92	40
JEL5404-08	25.0	1"	99.5	119	16	60	92	40