

# ST Series Shuttle Valve



We make the difference

- Valve
- DJF
- JELMP
- JELP/G
- MCS
- 4V100
- 4V200
- 4V300
- 4V400
- Manifold
- SV
- 3V1
- JEL
- 3VJZF
- 4VJZF
- MVSD
- VF, VZ
- BM
- Diaphragm
- Coil
- 2V
- 2W
- 2W(Big)
- 2P
- 2L
- VX
- PU
- PU225
- 2Q
- JEL5404
- JEL6213
- BU
- Pulse
- JELJZF
- 4H
- TSV
- MPV
- 4HV
- HV, K
- 4R
- FV
- MSV
- JM
- ASC, RE
- QE, QEA
- ST**
- HSV



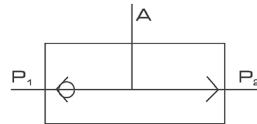
ST-01

ST-02

## Ordering Code

ST	01
Series Code	Port Size
ST : Shuttle Valve	01: G 1/8"
	02: G 1/4"
	03: G 3/8"
	04: G 1/2"
	06: G 3/4"
	08: G 1"

## Symbol

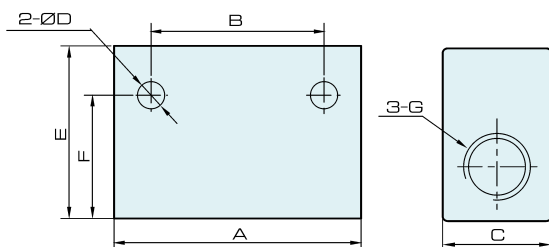


## Specification

Model	ST-01	ST-02	ST-03	ST-04	ST-06	ST-08
Working Medium	Air					
Effective Cross Section Area	G 1/8"	G 1/4"	G 3/8"	G 1/2"	G 3/4"	G 1"
Port Size	7.5 mm <sup>2</sup>	21 mm <sup>2</sup>	40 mm <sup>2</sup>	60 mm <sup>2</sup>	110 mm <sup>2</sup>	190 mm <sup>2</sup>
Working Pressure	0 ~ 1.0 MPa					
Ambient Temperature	0 ~ 60 °C					

## Overall Dimension

### ST Series



## Dimension

Model Symbol	A	B	C	D	E	F	G
ST-01	40	24	16	4.5	25	20.5	G 1/8"
ST-02	50	35	22	5.5	35	25	G 1/4"
ST-03	75	48	30	7	50	42	G 3/8"
ST-04	75	48	30	7	50	42	G 1/2"
ST-06	110	72	40	7	70	58	G 3/4"
ST-08	110	72	40	7	70	58	G 1"